

**Key to Programming**

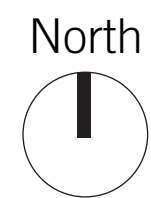
- 1. **Street Crossing** North 56th Street: Traffic Slowed by New Paving
- 2. **Courtyard Housing** 1500 sq. ft total including 500 sq. ft Outdoor Space 80 units
- 3. **Tensegrity Deck** "Elevated Streets Under the Sky"
- 4. **Courtyards** Light Well to Incubator Offices and City Hall
- 5. **Existing Church** Includes Existing Day-Care Facility
- 6. **Local Retail** Dry Cleaning, Food, Services; 20,000 sq. ft.
- 7. **Public Deck** Community Space + Entry to Shared Office Spaces
- 8. **Floor Thru Duplex** with Cool Core 1020 sq. ft. / 2 bedrooms 56 units
- 9. **Floor Thru Flats** with Cool Core 680 sq. ft. / 1 or 2 bedrooms 88 units
- 10. **Health Care** Social Services
- 11. **Supportive Housing** First Step Housing; Foyer Housing; Veterans Housing 200 units  
50,000 sq. ft. total. Community Solutions
- 12. **Public Play Grounds**
- 13. **City Hall Entry**
- 14. **Public Plaza**
- 15. **Transit Stops** Bike Path / Electric Car Charging / New Street Paving

NORTH

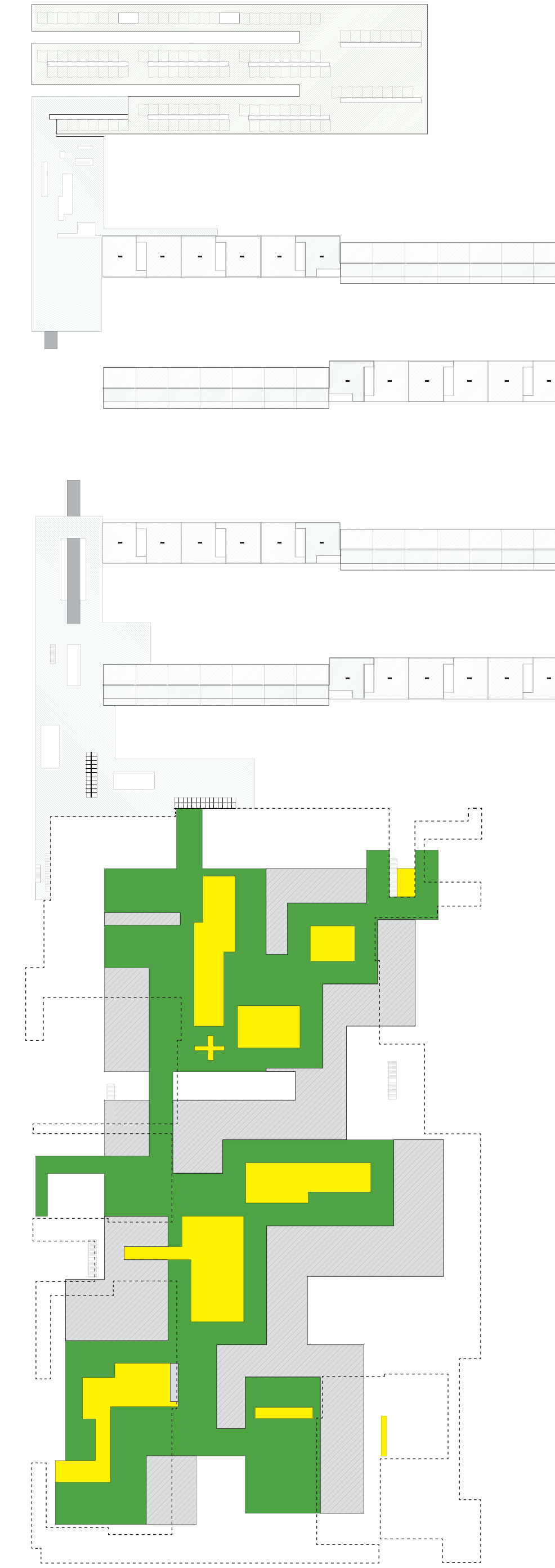
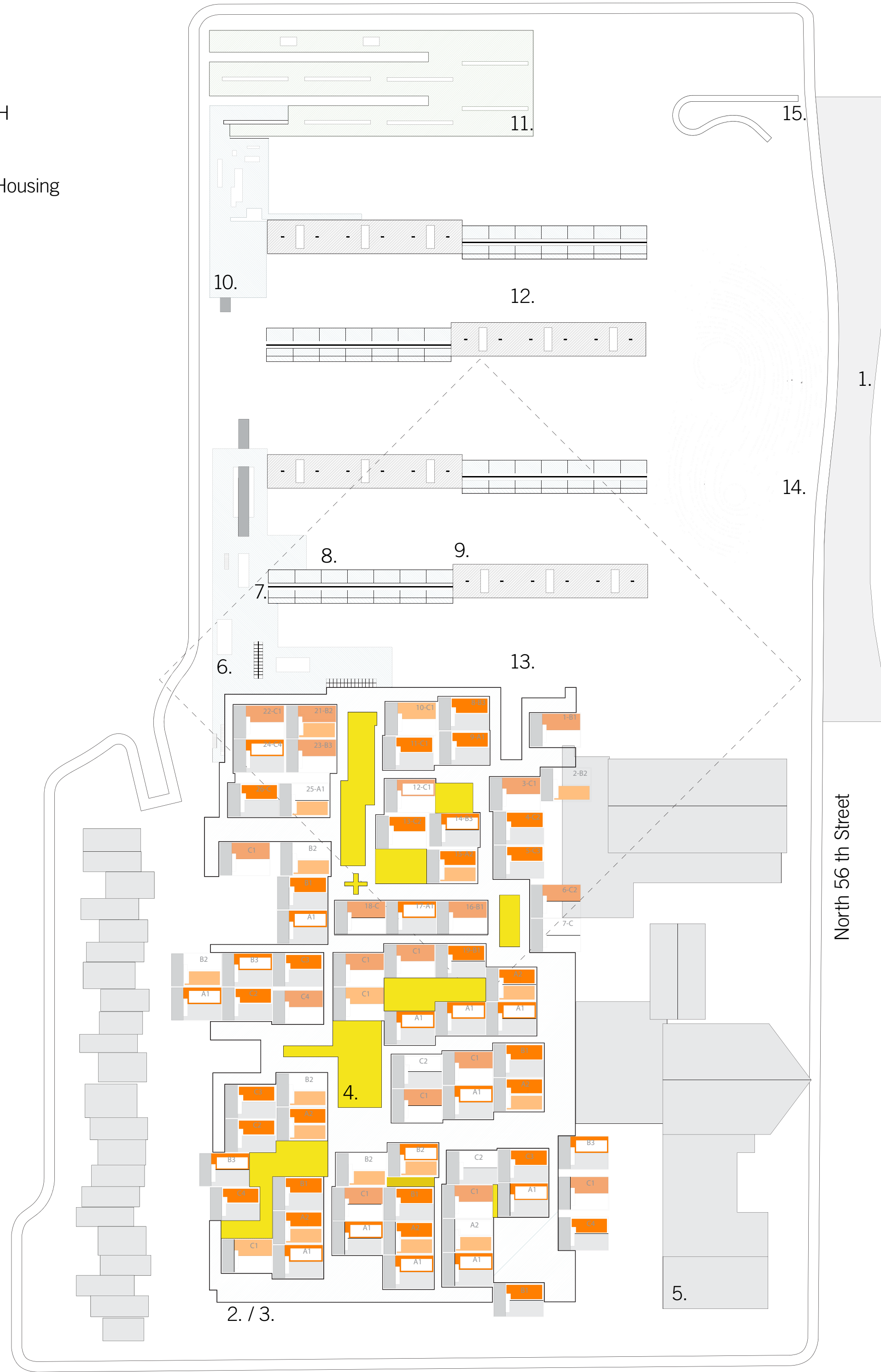
Supportive Housing

Living Space / Wind Tower  
collects prevailing winds  
Cool Core / Transsolar

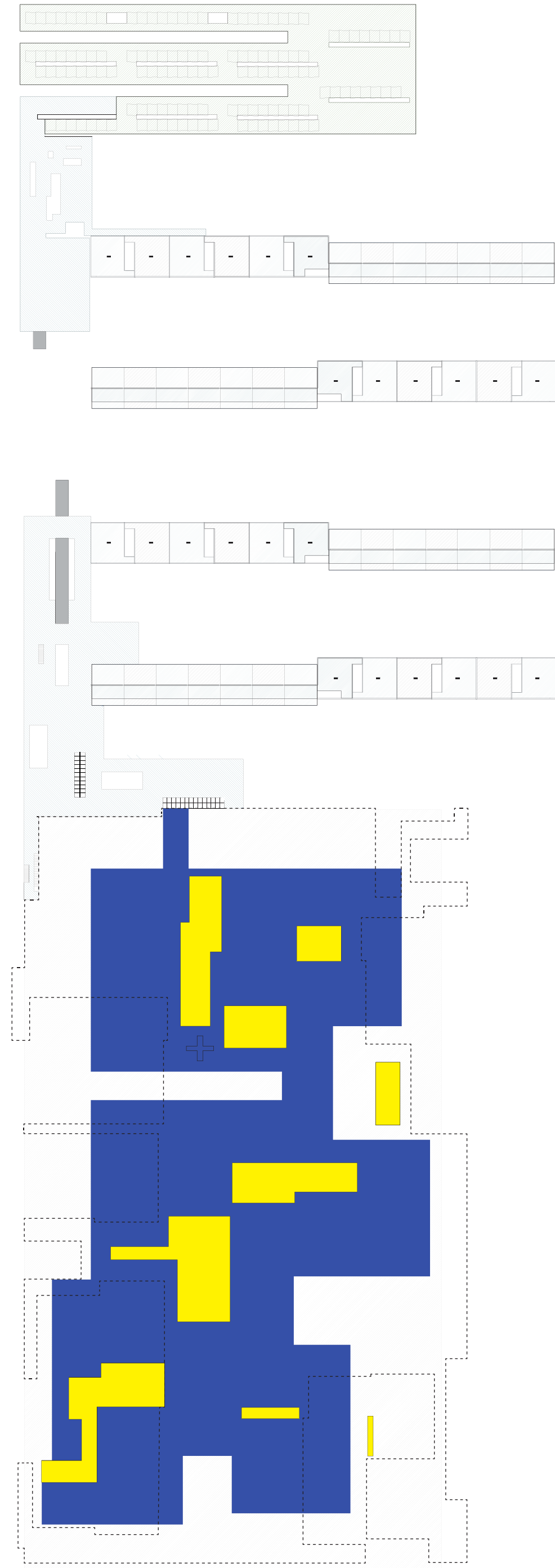
Floor Thru Duplex and Flats



Site Plan + Third Level  
Housing and "Streets Under the Sky"



Second Level  
Temple Terrace Incubator Office Space (shown in green)



First Level  
Temple Terrace City Hall (shown in blue)